



Japanese Sister City Relationships

- Current Activities and Future Challenges

4 March 2011

Kenji Ikeda

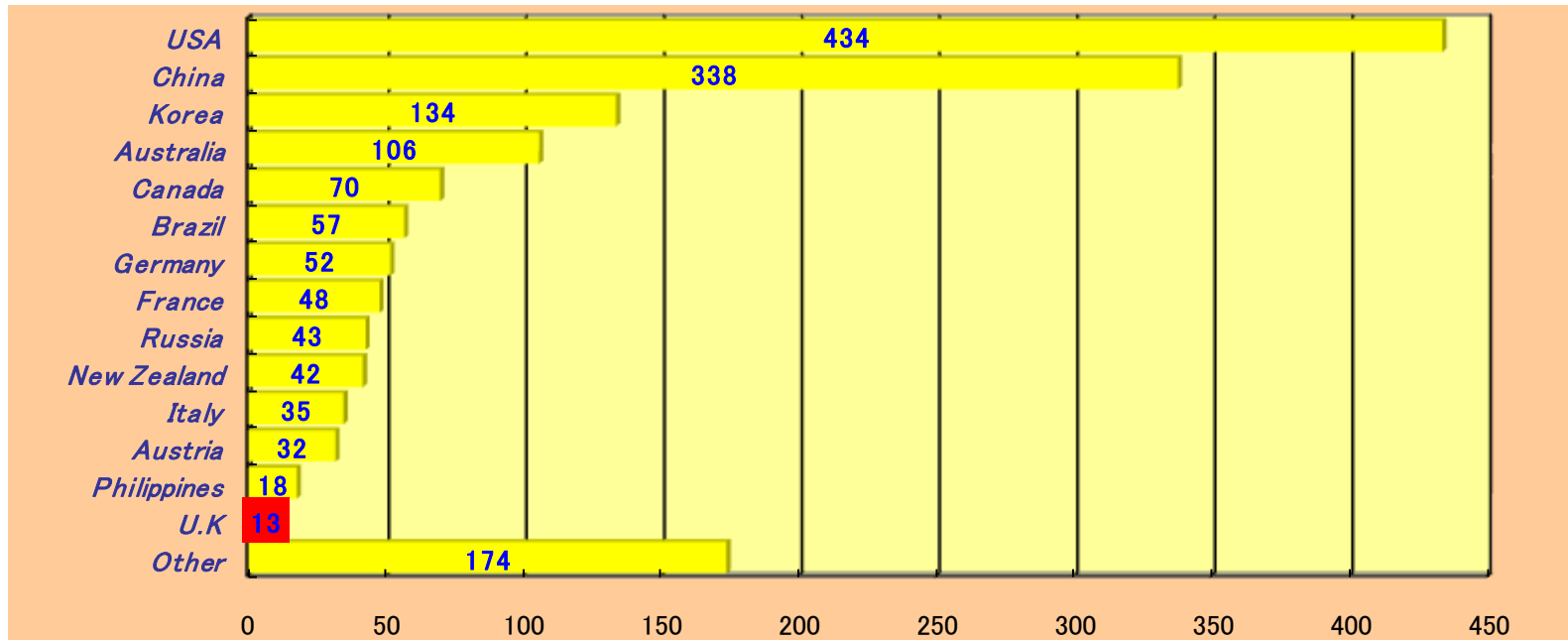
SG, CLAIR Tokyo

Japan's Sister City Relationships

The Number of Japan's Sister City Relationships by Country (1,596)

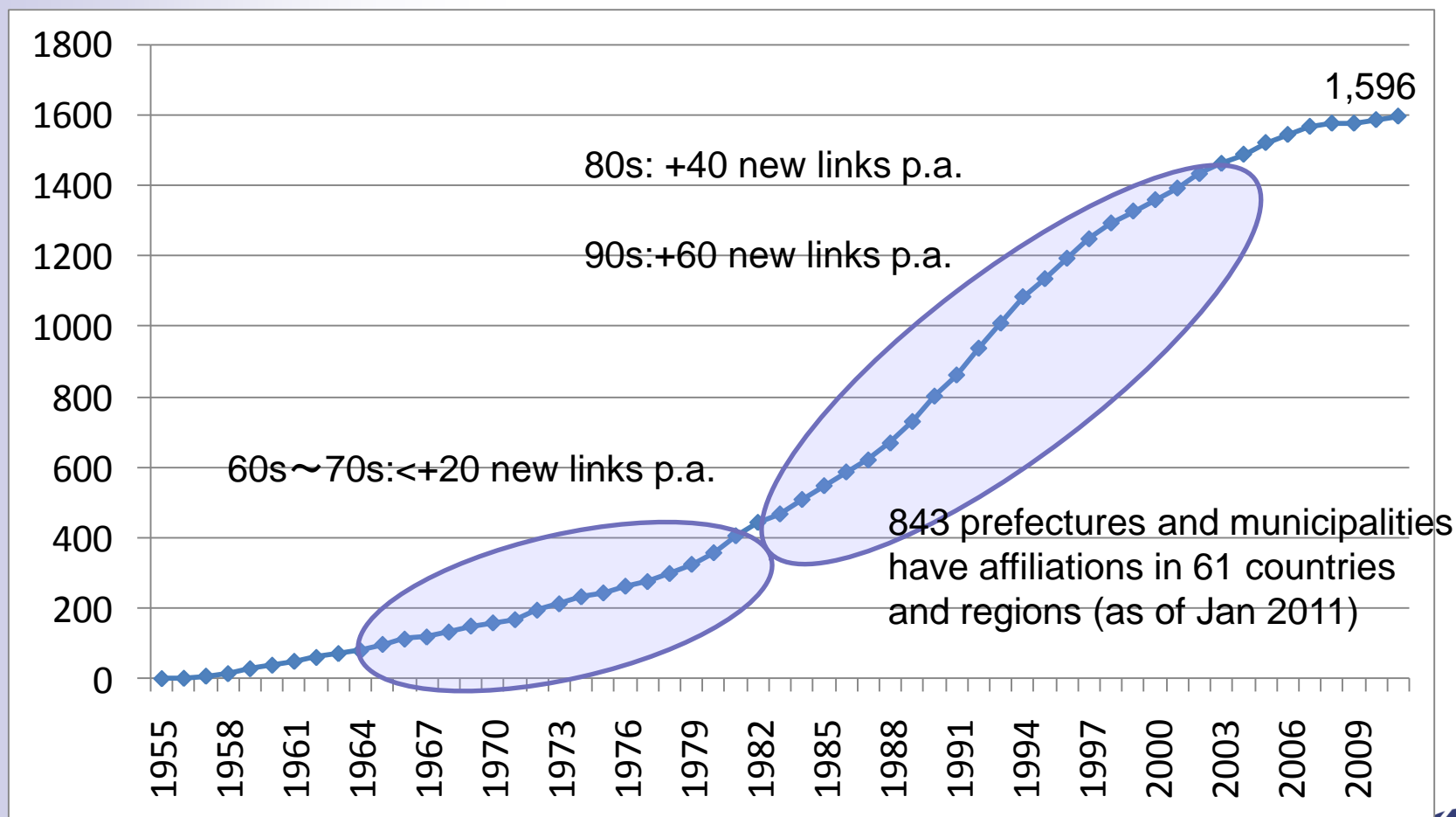
※Including Sister State/Prefecture Relationships

As of 31 January 2011



Change in the Number of Japan's Sister City Relationships

※Including Sister State/Prefecture Relationships



Benefits of Sister City Relationships

Cultural Exchange

- **Introduction to traditional arts and culture**
- **Way of life and values**
- **Creating through cross-cultural collaboration**



Cultural Exchange



Dunedin(NZ) – Otaru(Hokkaido)
“Sister Cities Combined Youth Chorus Festival”



Cultural Exchange

Coffs Harbour(NSW) - Sasebo (Nagasaki



Japanese Festival of Children's Day



Benefits of Sister City Relationships

Sports Exchange

- **Commonality - same rules apply**
- **Mutual respect**
- **True sporting experience**



Sports Exchange

Townsville(Qld) - Iwaki (Fukushima)



Friendly Rugby Match

Townsville Selected Team vs Iwaki Selected Team



Benefits of Sister City Relationships

Youth Exchange

- **Cross-cultural experience**
- **English education**
- **Japanese public school operated by local government**
- **English language education to be introduced to Y5-6 in 2011**
- **Local government plays major role in sister city relationships**



Youth Exchange

Central Highlands(Qld) – Fujisawa(Iwate)



School Exchange

Youth Exchange



Wairoa(NZ) - Kitaibaraki (Ibaraki)



Youth Exchange

Launceston(Tas) – Ikeda(Osaka)



Skype Session between Schools

Exchange between Communities

- Involve multicultural community
- Seniors, disabled people involved in matured affiliation



Exchange between Communities

Christchurch(NZ) – Kurashiki(Okayama)



“Disabled Person Goodwill Ambassadors ”

Benefits of Sister City Relationships

Exchange between local authorities

- **Local government drives sister city relationships**
- **Sharing experience and knowledge**
- **Common goal, common challenge**



Staff Exchange

Campbelltown(NSW) – Koshigaya(Saitama)



Internship Programme in Campbelltown



Staff Exchange

Port Phillip(Vic) – Obu(Aichi)



Internship Programme in Obu

Benefits of Sister City Relationships

Economic and Business Exchange

- **Some cases - Beneficial with strong economic link/base**
- **Most cases - Impractical**
(beyond local government's capacity, limited jurisdiction)
- **Opportunity gained by efforts and insight**



Economic Exchange

Brisbane(Qld) – Kobe(Hyogo)



Asia Pacific Cities Summit



Economic Exchange

Timaru(NZ) - Eniwa (Hokkaido)



“Timaru Shop” in Eniwa

Economic Exchange

Rotorua(NZ) – Beppu(Oita)



Bepputsurumi High School Excursion in Rotorua

Best Practices of Sister Cities Activities

① Swedish Town

Lexsand(Sweden) –Tobetsu(Hokkaido)

- Swedish Landscape
(dwellings, public offices)

- Swedish baker's oven
(only one in Japan)
→Introducing foreign food



Best Practices of Sister Cities Activities

② Importing Italian Products

Certaldo(Italy) - Kanra

- Importing Italian wine, which is now a local specialty (Seeking olive oil...)
- Exchange and exhibition of renowned art (Boccaccio, Yanagisawa)
- People, economic and cultural exchange



Best Practices of Sister Cities Activities

③ Commendation of Emigrants

Salinas(CA) – Ichiki kushikino(Kagoshima)

- Collective Emigration to the US in 1950's
- Recognition of hard experience of emigrants
- Exchange 2nd and 3rd generation Japanese-American youth



Best Practices of Sister Cities Activities

④ Exchange with POWs

Lueneburg(Germany) – Naruto(Tokushima)

- History of exchange with German POWs during WW 1
- Commemorating first performance of Beethoven Symphony No.9 (Choral) in Japan by POWs, concerts have been held annually.
- German Museum to commemorate involvement between German POWs and local community.

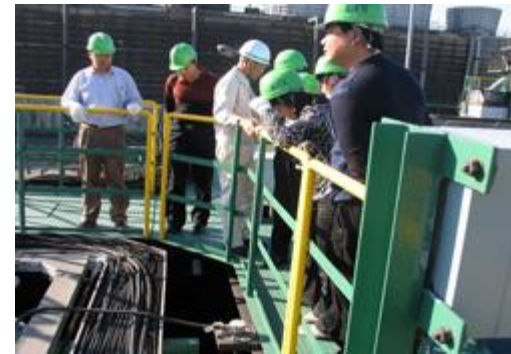


Best Practices of Sister Cities Activities

⑤ Technical Cooperation

Tianjin(China) – Yokkaichi(Mie)

- Information sharing and technical assistance to Tianjin city officials (environmental management system, community education and prevention of water pollution)
- Contribution to improvement of environment in Tianjin



Best Practices of Sister Cities Activities

⑥ “Anime” Exchange

Annecy(France) – Nerima(Tokyo)

- Birthplace of Japanese “anime”
- Host of International Animated Film Festival
- Agreement of exchange of animated film industry



2010 International Affiliation Exchange Commendation Award

– Minister for Internal Affairs & Communications

Shikaoi(Hokkaido) - Stony Plain(Alberta)

- Educational exchange incl. “Canada studies” and “Shikaoi Studies at Shikaoi schools
- Town development through flowers



Kyoto Prefecture

- Special Region of Yogyakarta(Indonesia)

- Common link -> Both ancient capitals
- Support of reconstruction efforts after Java earthquake
- “Te-Collabo” (Technology Collaboration) of traditional textiles and dyed goods



Kitakyushu(Fukuoka)

– Dalian (China) – Incheon(Korea)

- Economic advancement and various projects
- From city to city friendship to multi-municipal relations
- 10 City Pan Yellow Sea – a collaborative regional problem solving organisation
- The Organization for the East Asia Economic Development (OEAED)

Policy dialogue, trade and investment promotion

Including the 2009 Kanou Kai (Pan Yellow Sea) year and the Japan-China-Korea Coast Clean up project



OEAED Member Characters & Japan-China-Korea Coast Clean up project

Pan-Yellow Sea Region



Wyong Shire(NSW) Withdrawing from Affiliation with Tanabe(Wakayama)

CENTRAL COAST

Express Advocate

<http://express-advocate-wyong.wherelive.com.au>

Council to find closer city ties

NEWS

LOCAL NEWS

23 AUG 09 @ 12:29AM BY ERROL SMITH

WYONG Council has severed sister city ties with Tanabe in Japan and Southland in New Zealand.

Mayor Bob Graham said he had never been a supporter of the program because it delivered no real economic benefit for either participants.

"It was no more than a junket," he said.

Instead, the council voted to investigate ties with regions closer to home, which could have economic benefits.

Cr Graham said that might include a relationship with another Australian city or shire.

"We could look at somewhere like Dubbo for instance and promote the tourism strengths of both regions," he said.

"This would be far more beneficial than anything we've had with Tanabe or Southland.



Turning Point for Sister Cities

- People think and act more globally than before
- Other paths for international exchange
- Development in transport and telecommunication

What can sister cities achieve today?



Potential Directions in the Future

- Pursuit of economic benefit
- Dialogue between local governments on policy issues
- Government driven to community based activities



About CLAIR

- CLAIR, the Council of Local Authorities for International Relations, is a semi-government, non-profit organisation which was jointly established by Japanese prefectures and municipalities to help facilitate their various international programmes.
- Japanese Ministry of Internal Affairs and Communications, which covers local government endorsed CLAIR's establishment in 1988 and continues to provide guidance to CLAIR.
- CLAIR is funded by local governments, and majority of staff is seconded from local governments.



CLAIR's 4 Pillars

1 Overseas Offices

■ Seven Major Locations

London, Paris, New York, Beijing, Seoul, Singapore and Sydney.
Overseas platforms for local governments' activities.

■ Disseminating Information on Japanese Local Government

Up-to-date and relevant information and the challenges LGs face.
Organizing seminars, participating in exhibitions and fairs.

■ Policy Research

Research on policies and practices of local government overseas
Introducing to the Japanese public through publications and website



CLAIR's 4 Pillars

2 The JET Programme

■ One of the World's Largest Exchange Programmes

Japan Exchange and Teaching (JET) Programme has more than 4,000 participants from over 30 countries. Living and working in local communities, they promote grass-roots cross-cultural understanding.

■ ALT, CIR and SEA

JET participants work either as an Assistant Language Teacher, a Coordinator for International Relations or a Sports Exchange Advisor.

■ Connoisseurs of Japan Abroad

52,000 former JET participants in 54 countries. JET Alumni Association boasts 51 chapters around the globe.



CLAIR's 4 Pillars

3 International Activities

■ International Exchange

Encouraging Japanese local governments to become active on the international stage.

Providing assistance and information regarding sister city relations and support for international conferences.

■ Economic Exchange

Supporting overseas economic activities of local governments, eg. promoting exports, attracting foreign tourists, etc.

■ International Cooperation

Assisting Japanese local governments to provide technical assistance to foreign countries in environment, agriculture, water supply, fire fighting and healthcare fields.



CLAIR's 4 Pillars

4 Promoting Multiculturalism

■ Information in 13 Languages

Providing information to foreign residents relating to life in Japan.

■ Training on Multicultural Policies

Providing training for local government staff in charge of settlement of foreign residents.

■ Community Collaboration

Encourage cooperation amongst international exchange associations and NGOs throughout Japan.



CLAIR's Roles for Sister City Affiliation

- Supporting and promoting sister city relationships
- Providing information to relevant agencies
- Supporting Japanese and foreign cities seeking sister city relationship
- Supporting activities of Japanese cities financially
- Recommending the Government for the Minister's commendation award



自治体国際化
CLAIR FORUM
フォーラム

99

SEP. 2006
Vol.203

特集

防災・災害と外国人支援

Disaster Prevention-Support for Foreign Resident in Natural Disasters



自治体国際化協会

CLAIR 全国協議会, Council of Local Authorities for International Relations 全国版です。
本誌は、定くしの普及発行事業として助成を受け作成されたものです。

オーストラリア・ニューサウスウェールズ州

クーラモン・
シャイヤー

<http://www.coolamon.nsw.gov.au/>

人口：約4,000人
面積：2,496 km²

当協会では、自治体の姉妹提携・姉妹交流を促進するため、姉妹交流ライブラリーを設置しています。このコーナーでは、ライブラリーの業務の一環として、海外の交流希望自治体を紹介しています。なお、ライブラリーについて詳しくは、次頁をご覧ください。

お問い合わせ先・交流観音課

TEL 03-6591-5481

FAX 03-6591-15346

e-mail shimae@clair.or.jp

クーラモン・シャイヤーは、オーストラリアの総人口の三分の一を占めるニューサウスウェールズ州にあります。ニューサウスウェールズ州は、南半球の温帯地帯に属し、東部のタスマン海沿岸には肥沃な農業地帯が広がっています。一方、西部は最高気温五一度の記録を持つ乾燥地域にもなっています。また、ヴィクトリア州にまたがる南部のスノーイー山地では、冬には雪原が広がる多くのスキーヤーが訪れるなど、多様な表情を持つ州です。

クーラモン・シャイヤーは、このニューサウスウェールズ州の州都シドニーから南西約五〇〇km、リベリナ地方にあります。人口規模の小さな自治体ですが、面積は二四九六km²で、神奈川県とほぼ同じ広さになります。気候は、夏の最高気温が三〇度ほどになりますが、冬の最低気温も約五度と温暖で比較的暮らしやすい地域です。雨量も月間平均雨量が年間を通じて四〇mm前後と較差が少なく、安定しています。

また、この地域は、リベリナ地方における最も豊かな農業田園地域で、菜種、小麦、大麦、米、干草、ルピナス、オリブ等の農産物に加え、州内でも



屈折のワインの産地です。特に上質のデザートワインが有名です。ほかに、羊や牛の牧畜を行っており、アルパカウールを生産しています。

一九二〇年代に、ヨーロッパからの移住者によって建てられた建造物が、現在も、ホテル、店舗、学校、教会として残っており、まちの文化遺産として多くの観光客を魅了しています。

共通点のある日本の自治体と、児童から高齢者まですべての世代で、文化、スポーツ等の交流を通じて、友好の絆を築いていくことを希望しています。

Thank you.

Kenji Ikeda

k-ikeda@clair.or.jp

www.clair.or.jp

